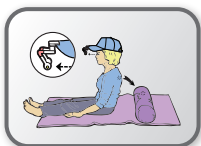
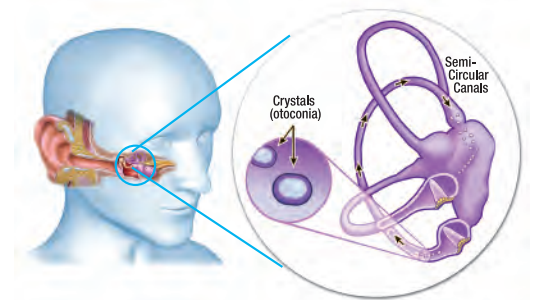


# DizzyFIX™

Training Device



The DizzyFIX™ training device is an interactive device that teaches anyone how to easily perform the Epley. The Epley is a particle repositioning maneuver for people diagnosed with BPPV (*Benign Paroxysmal Postional Vertigo*) the most common cause of vertigo. The general objective of the DizzyFIX device is to visually guide the user through the maneuver.



- The device clips onto the hat provided (or any common baseball hat)



- The specially designed tube and ball are visual representations of the otoconia floating in the middle ear



- The shape of the tube combined with the motion of the particle (ball), complete the maneuver
- The patient guides the ball through the device, which completes full maneuver

Product Number	Description	Unit / Box
DF999	<ul style="list-style-type: none"> <li>• DizzyFIX device</li> <li>• Cap</li> <li>• DVD</li> <li>• Step-by-step instructions</li> </ul>	1



Call **1.888.229.2875** to order today!



Summit Medical, Inc. | St. Paul, MN USA | local p: 651.789.3939 f: 651.789.3979 | toll free p: 1.888.229.2875 f: 1.888.229.1941

[www.summitmedicalusa.com](http://www.summitmedicalusa.com)

CAUTION: Federal (USA) law restricts these devices to sale by or on the order of a physician. Indications, contraindications, warnings and instructions for use can be found in the product labeling supplied with each device. ©2011 Summit Medical, Inc. All rights reserved. Summit Medical is the US distributor for the DizzyFIX. DizzyFIX is a trademark of Clearwater Clinical, Ltd. DF-0002/C AUG11